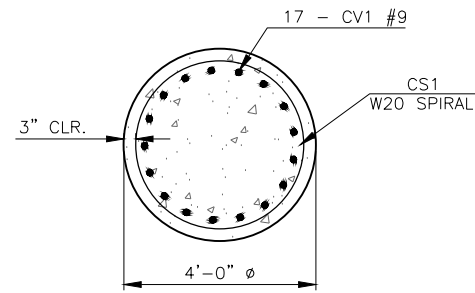
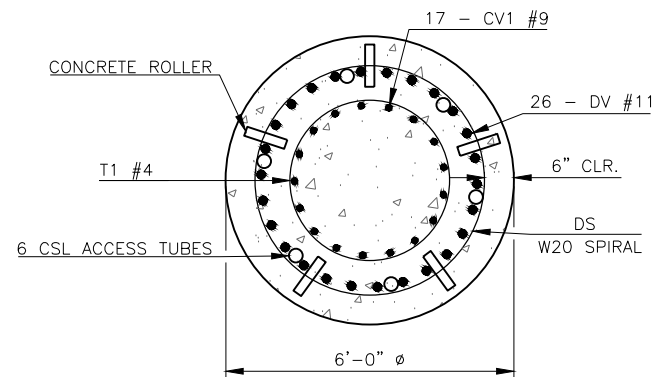


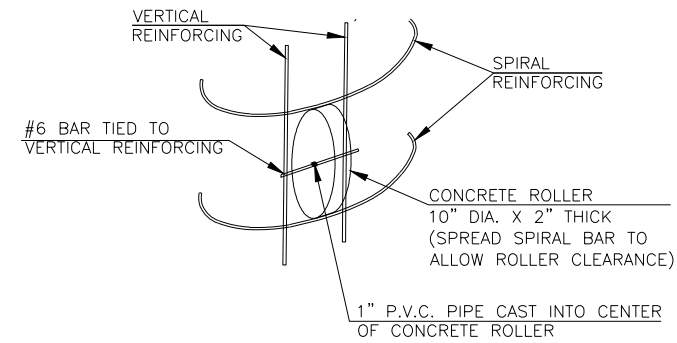
SECTION A-A



SECTION B-B



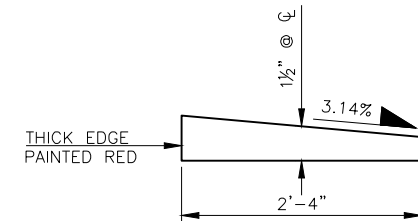
SECTION C-C



DRILLED SHAFT ROLLER DETAIL

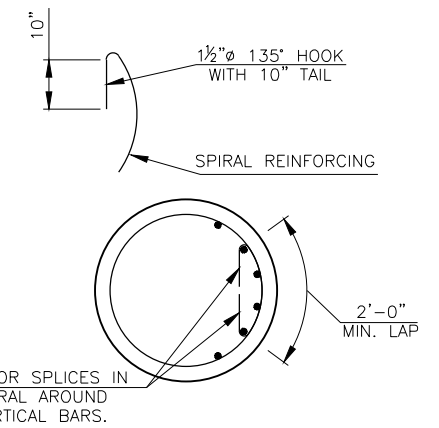
NOTE:
CONCRETE USED IN THE CONCRETE ROLLER SHALL HAVE A MINIMUM 28 DAY COMPRESSION STRENGTH OF 4,000 PSI. SLAB BOLSTERS, HIGH CHAIRS, OR PLASTIC ROLLERS SHALL NOT BE SUBSTITUTED FOR THE CONCRETE ROLLERS.

THE CONTRACTOR MAY USE ALTERNATE METHODS OF MAINTAINING DRILLED SHAFT REINFORCING STEEL CLEARANCE, SUBJECT TO APPROVAL BY THE ENGINEER.

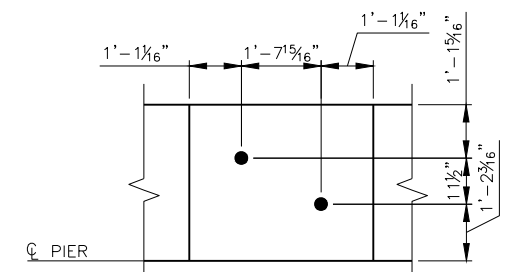


BEVELED ANCHOR PLATE DETAILS

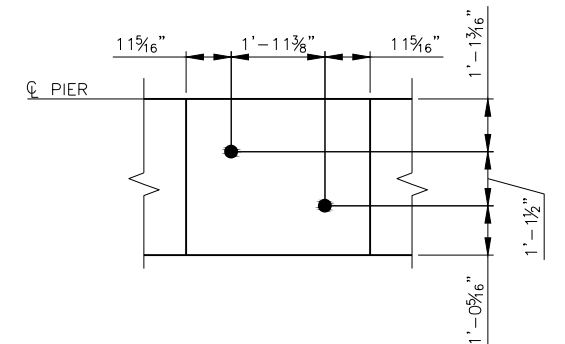
NOTE:
THIS BRIDGE REQUIRES BEVELED ANCHOR PLATES. FOR ADDITIONAL DETAIL OF BEVELED ANCHOR PLATES, SEE STANDARD CB26-C-SK0..30-BRG-PC2-01E AND CB26-C-SK0..30-BRG-PC3-01E



SPIRAL REINFORCING SPLICE DETAIL



TYPE II ANCHOR BOLT LAYOUT



TYPE III ANCHOR BOLT LAYOUT

PIER QUANTITIES				
ITEM	UNIT	PIER NO. 1	PIER NO. 2	TOTAL
CLASS A CONCRETE	C.Y.	51.0	51.8	102.8
REINFORCING STEEL	LB.	8,760	8,760	17,520
DRILLED SHAFT 72" DIAMETER	L.F.	64	48	112
CROSSHOLE SONIC LOGGING	EA.	1		1